



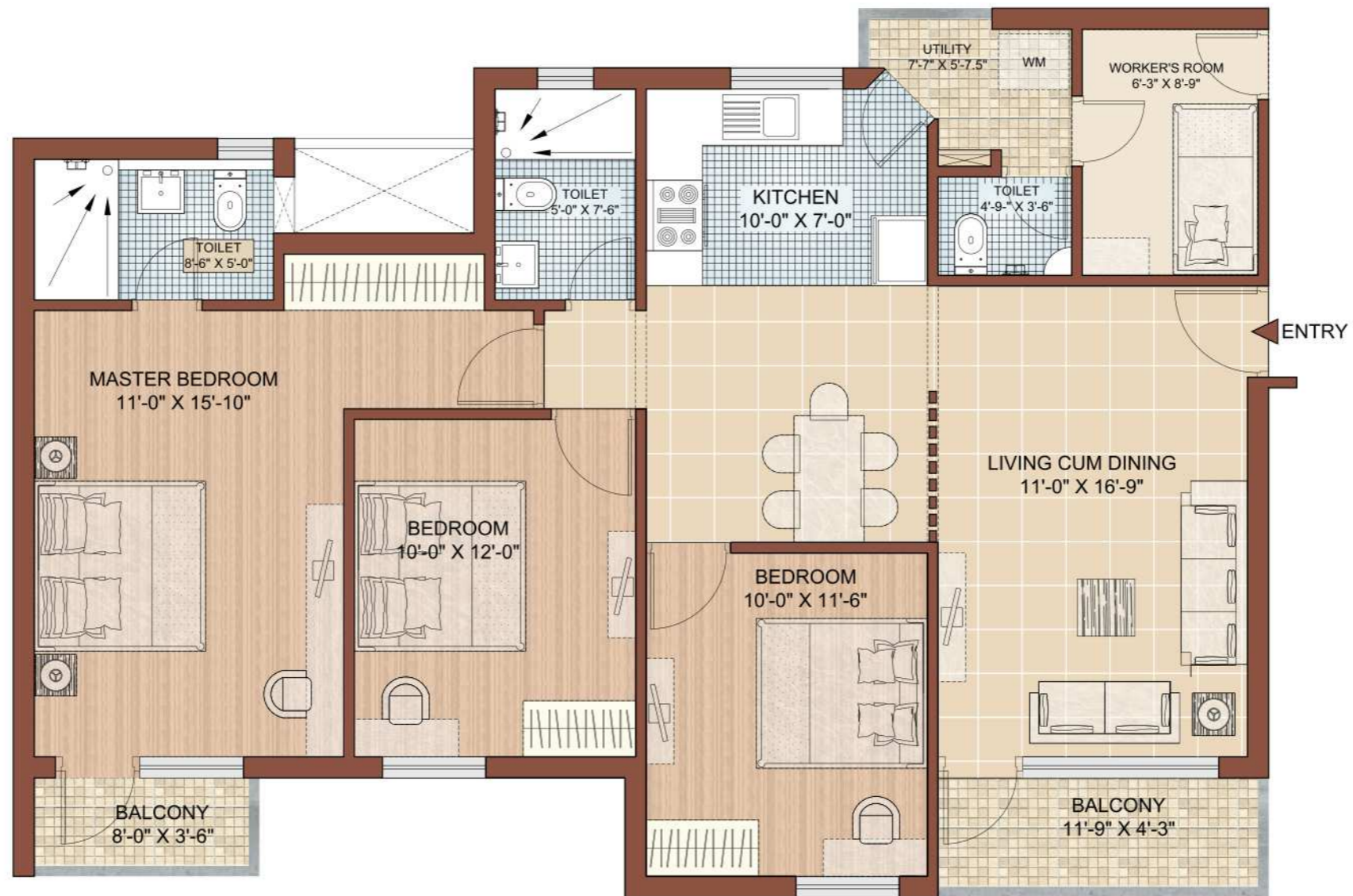
BLOCK - D  
 TYPICAL FLOOR PLAN  
 TYPE - 3BHK+W+2B

APARTMENT  
 AREA = 1370 SQ.FT

KASA ISLES, SECTOR 129  
 CONCEPT SKETCH DESIGN

WISH TOWN, JAYPEE GREENS, NOIDA  
 JAYPEE INFRATECH LTD.

**ARCOP**  
 MAY 2010



BLOCK - D  
 UNIT PLAN  
 TYPE - 3BHK+W+2B

AREA = 1370 SQ.FT

KASA ISLES, SECTOR 129  
 CONCEPT SKETCH DESIGN

WISH TOWN, JAYPEE GREENS, NOIDA  
 JAYPEE INFRATECH LTD.

**ARCOP**  
 MAY 2010



BLOCK - C  
 TYPICAL FLOOR PLAN  
 TYPE - 3BHK + 2B

APARTMENT  
 AREA = 1250 SQ.FT

KASA ISLES, SECTOR 129  
 CONCEPT SKETCH DESIGN

WISH TOWN, JAYPEE GREENS, NOIDA  
 JAYPEE INFRA TECH LTD.

**ARCOP**  
 MAY 2010



BLOCK - E  
 TYPICAL FLOOR PLAN  
 TYPE - 3BHK + W + 3B

APARTMENT  
 AREA = 1570 SQ.FT

KASA ISLES, SECTOR 129  
 CONCEPT SKETCH DESIGN

WISH TOWN, JAYPEE GREENS, NOIDA  
 JAYPEE INFRA TECH LTD.

ARCOP  
 MAY 2010



BLOCK - F  
 TYPICAL FLOOR PLAN  
 TYPE - 4BHK + W

APARTMENT  
 AREA = 1870 & 1935 SQ.FT

KASA ISLES, SECTOR 129  
 CONCEPT SKETCH DESIGN

WISH TOWN, JAYPEE GREENS, NOIDA  
 JAYPEE INFRA TECH LTD.

ARCOP  
 MAY 2010



BLOCK - H  
 TYPICAL FLOOR PLAN  
 TYPE - 4BHK + W + 4B

APARTMENT  
 AREA = 2300 SQ.FT

KASA ISLES, SECTOR 129  
 CONCEPT SKETCH DESIGN

WISH TOWN, JAYPEE GREENS, NOIDA  
 JAYPEE INFRA TECH LTD.

**ARCOP**  
 MAY 2010



**BLOCK A**  
 2 BHK + STUDIO APARTMENTS  
 TYPICAL FLOOR PLAN

APARTMENT AREA  
 2BHK = 920 Sq.ft.  
 STUDIO APA = 535 Sq.ft.

**KASA ISLES, SECTOR 129**  
 CONCEPT SKETCH DESIGN

WISH TOWN, JAYPEE GREENS, NOIDA  
 JAYPEE INFRA TECH LTD.

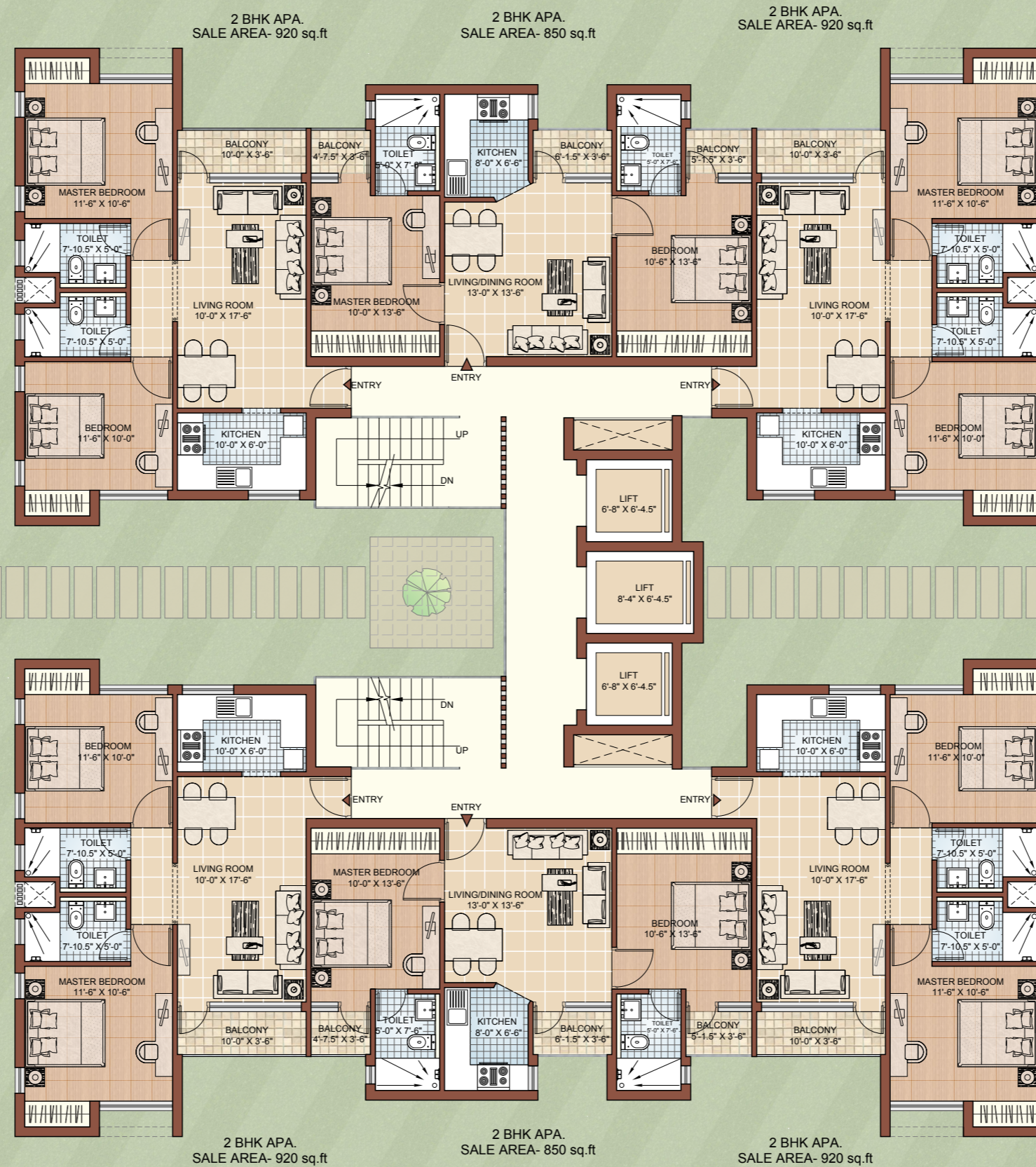
**ARCOP**  
 MAY 2010



**2 BHK APA.**  
SALE AREA- 920 sq.ft

**STUDIO APA.**  
SALE AREA- 535 sq.ft





BLOCK-B  
2 BHK + 2BHK APARTMENTS  
TYPICAL FLOOR PLAN

APARTMENT AREA  
2BHK CORNER TYPE= 920 Sq.ft.  
2BHK= 850 Sq.ft.

KASA ISLES, SECTOR 129  
CONCEPT SKETCH DESIGN

WISH TOWN, JAYPEE GREENS, NOIDA  
JAYPEE INFRATECH LTD.

ARCOP  
MAY 2010



2 BHK APA.  
SALE AREA- 920 sq.ft

2 BHK APA.  
SALE AREA- 850 sq.ft



#### LEGEND

- TYPE (A) - 1 BHK - 535 sft.
- 2 BHK (CORNER) - 920 sft.
- TYPE (B) - 2 BHK - 850 sft.
- 2 BHK (CORNER) - 920 sft.
- TYPE (C) - 3 BHK + 2 BATH - 1250 sft.
- TYPE (D) - 3 BHK + W + 2BATH - 1370 sft.
- TYPE (E) - 3 BHK + W + 3BATH - 1570 sft.
- TYPE (F) - 4 BHK + W - 1870 sft.
- 4 BHK + W (CORNER) - 1935 sft.
- TYPE (G) - DUPLEX - 1500 sft.
- TYPE (H) - 4 BHK + W - 2300 sft.



SITE PLAN  
SCALE 1:1250

KASA ISLES, SECTOR -129  
CONCEPT SKETCH DESIGN

WISH TOWN, JAYPEE GREENS, NOIDA  
JAYPEE INFRA TECH LTD.

ARCOP

MAY, 2010





BLOCK - C  
 UNIT PLAN  
 TYPE - 3BHK + 2B

AREA = 1250 SQ.FT

KASA ISLES, SECTOR 129  
 CONCEPT SKETCH DESIGN

WISH TOWN, JAYPEE GREENS, NOIDA  
 JAYPEE INFRA TECH LTD.

**ARCOP**  
 MAY 2010



BLOCK - E  
 UNIT PLAN  
 TYPE - 3BHK + W + 3B

AREA = 1570 SQ.FT

KASA ISLES, SECTOR 129  
 CONCEPT SKETCH DESIGN

WISH TOWN, JAYPEE GREENS, NOIDA  
 JAYPEE INFRA TECH LTD.

ARCOP  
 MAY 2010



BLOCK - F  
 UNIT PLAN  
 TYPE - 4BHK + W

AREA = 1870 SQ.FT

KASA ISLES, SECTOR 129  
 CONCEPT SKETCH DESIGN

WISH TOWN, JAYPEE GREENS, NOIDA  
 JAYPEE INFRATECH LTD.

ARCOP  
 MAY 2010



BLOCK - H  
 UNIT PLAN  
 TYPE - 4BHK + W + 4B

AREA = 2300 SQ.FT

KASA ISLES, SECTOR 129  
 CONCEPT SKETCH DESIGN

WISH TOWN, JAYPEE GREENS, NOIDA  
 JAYPEE INFRA TECH LTD.

ARCOP  
 MAY 2010