

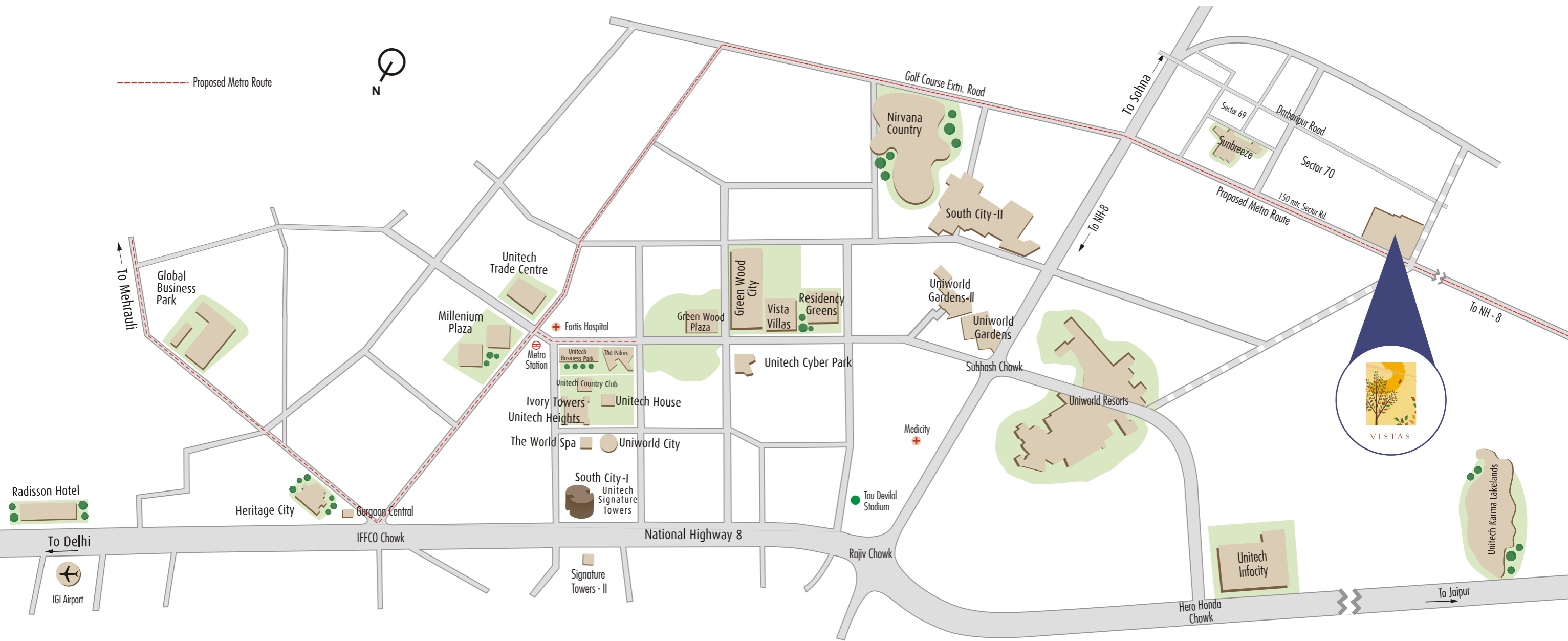
VISTAS

SECTOR-70, GURGAON



Location Map

Explore the nature's bounty coupled with savouring the benefits of an urban life.



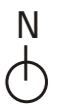
- Well connected to N.H.-8 & Golf Course Extn. Road
- Excellent connectivity to Gurgaon - NCR through the upcoming Metro
- Proximity to residential, retail and commercial development on Sohna Road & Nirvana Country
- World class schools such as Shikshantar, The Shri Ram School, DPS, Amity International, Heritage, Pathways & GD Goenka within 25 minutes driving distance
- Leading hospitals such as Medicity, Artemis, Max, Fortis, Apollo, Sir Gangaram & Batra Hospital within 25 minutes driving distance

Master Plan



LEGEND

- 1 Entry / Exit
- 2 Central Green with Basement Parking
- 3 Surface Parking
- 4 Club House
- 5 Swimming Pool
- 6 Kid's Play Area
- 7 Social Housing
- 8 Nursery School





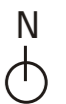
Key Plan



KEY PLAN

- 1 Club House
- 2 Swimming Pool
- 3 Kid's Play Area
- 4 Central Green with Basement Parking
- 5 Open Parking

- A1 Ground + 13
- A2 Ground + 13
- A3 Ground + 13
- A4 Ground + 13
- A5 Ground + 13
- A6 Ground + 13



Key Plan



Tone your soul to its natural rhythm

Presenting a heaven of space & serenity to get away from your worries.

- Landscaped greens
- Jogging & Walking tracks
- Manicured gardens
- Manned barriers at entry & exit
- Intercom facility



At the heart of it all and yet apart

Experience an array of leisurely activities surrounding your home.

- Swimming pool
- Club House
- Adjoining extensive green area
- Schools



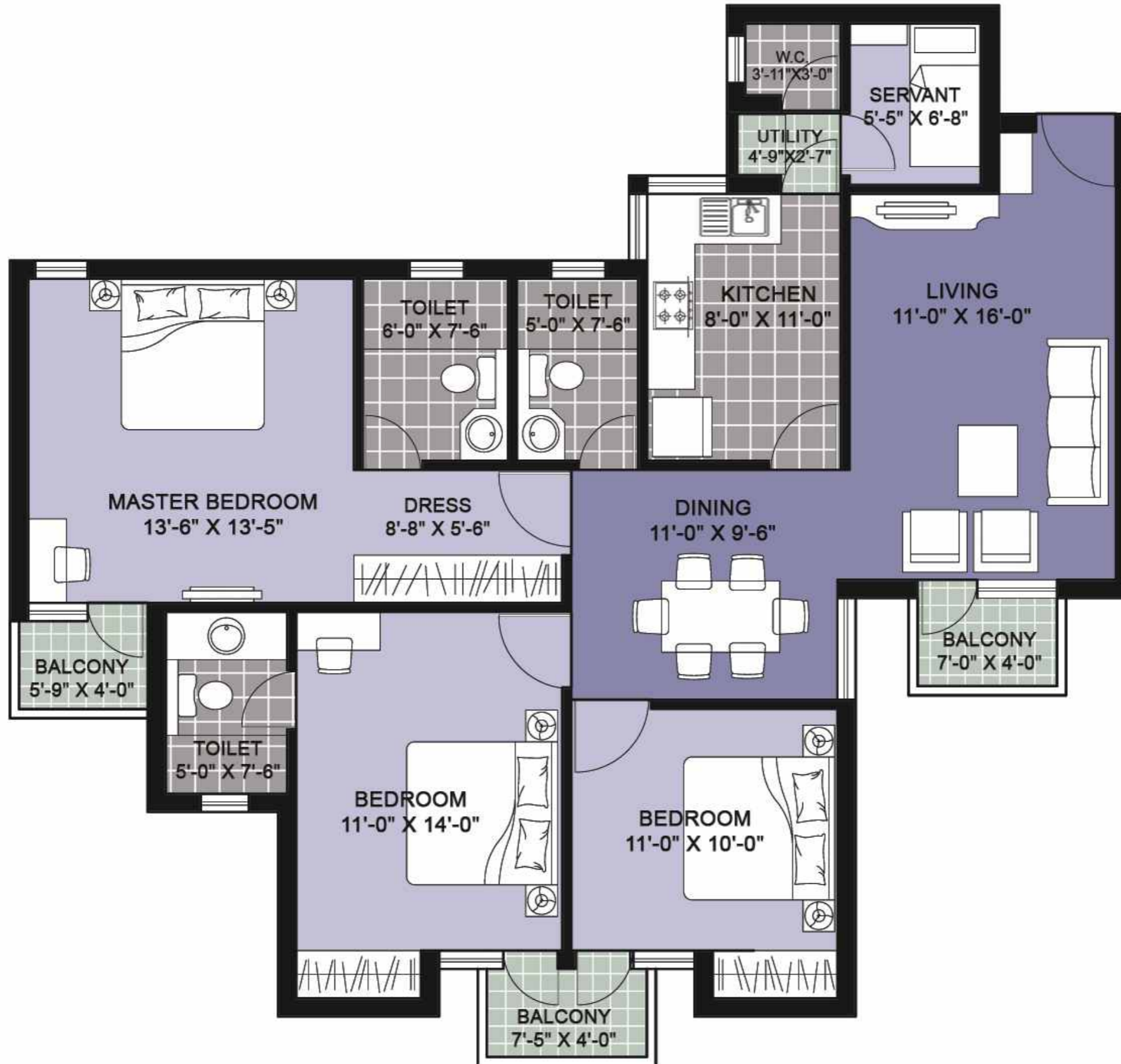
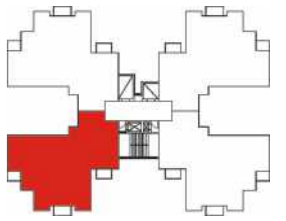
Recharge yourself for a blissful stay

Get ready to experience living where joy and peace unite

- Open lawn tennis court
- Open badminton court
- Sand pits
- Tot-lots with kids play equipment

Type - Y1

Saleable Area: 1560 sq. ft.

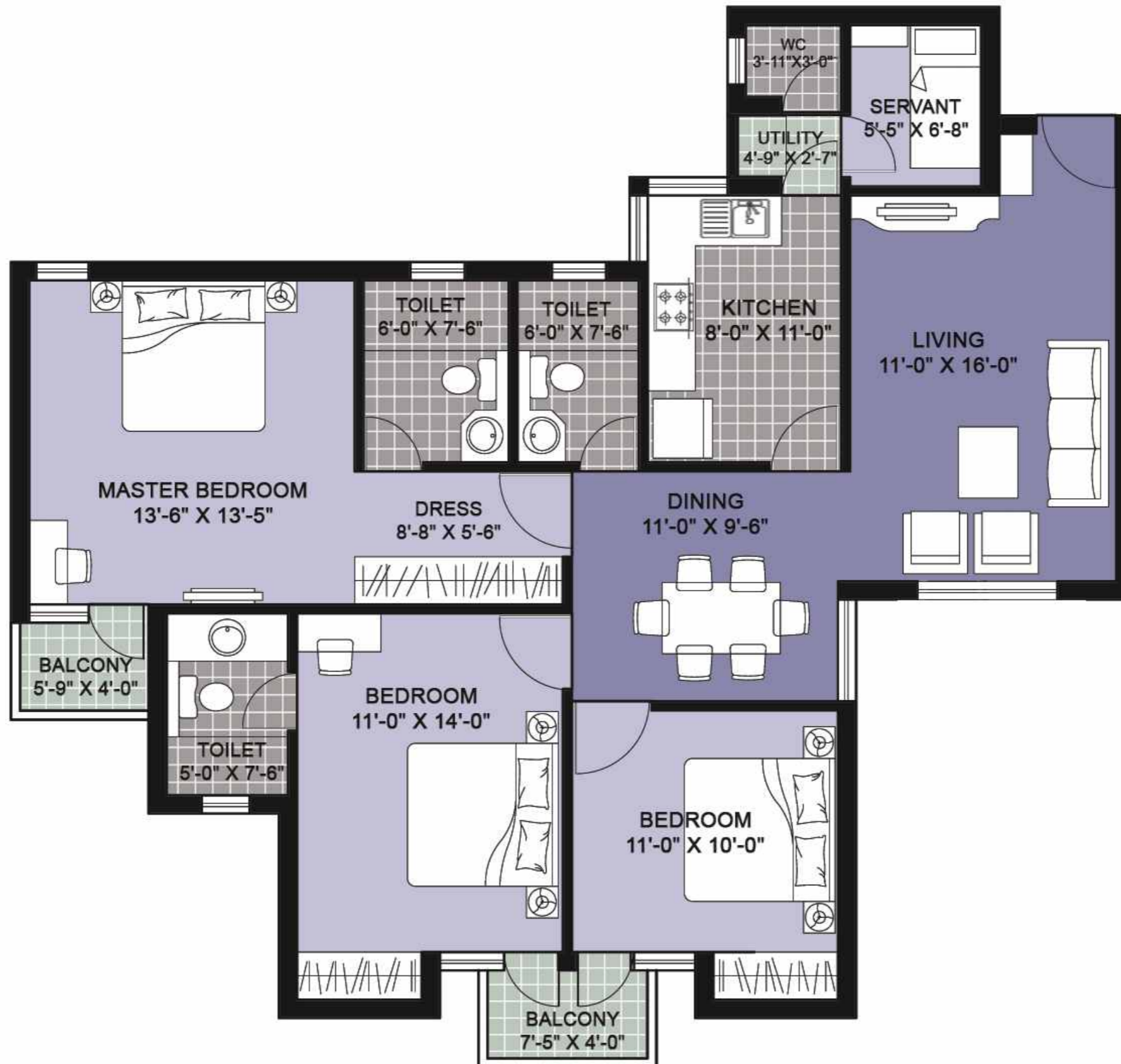
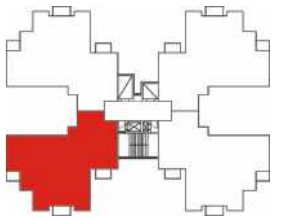


A1 - A6 : G01* - 1401*, G02* - 1402*
A1, A3, A5 : G03* - 1403*, 204 - 1404
A2, A4, A6 : G04* - 1404*, 203 - 1403

Note: * indicates mirror image

Type - Y2

3BR3TSQ: 1530 sq. ft.

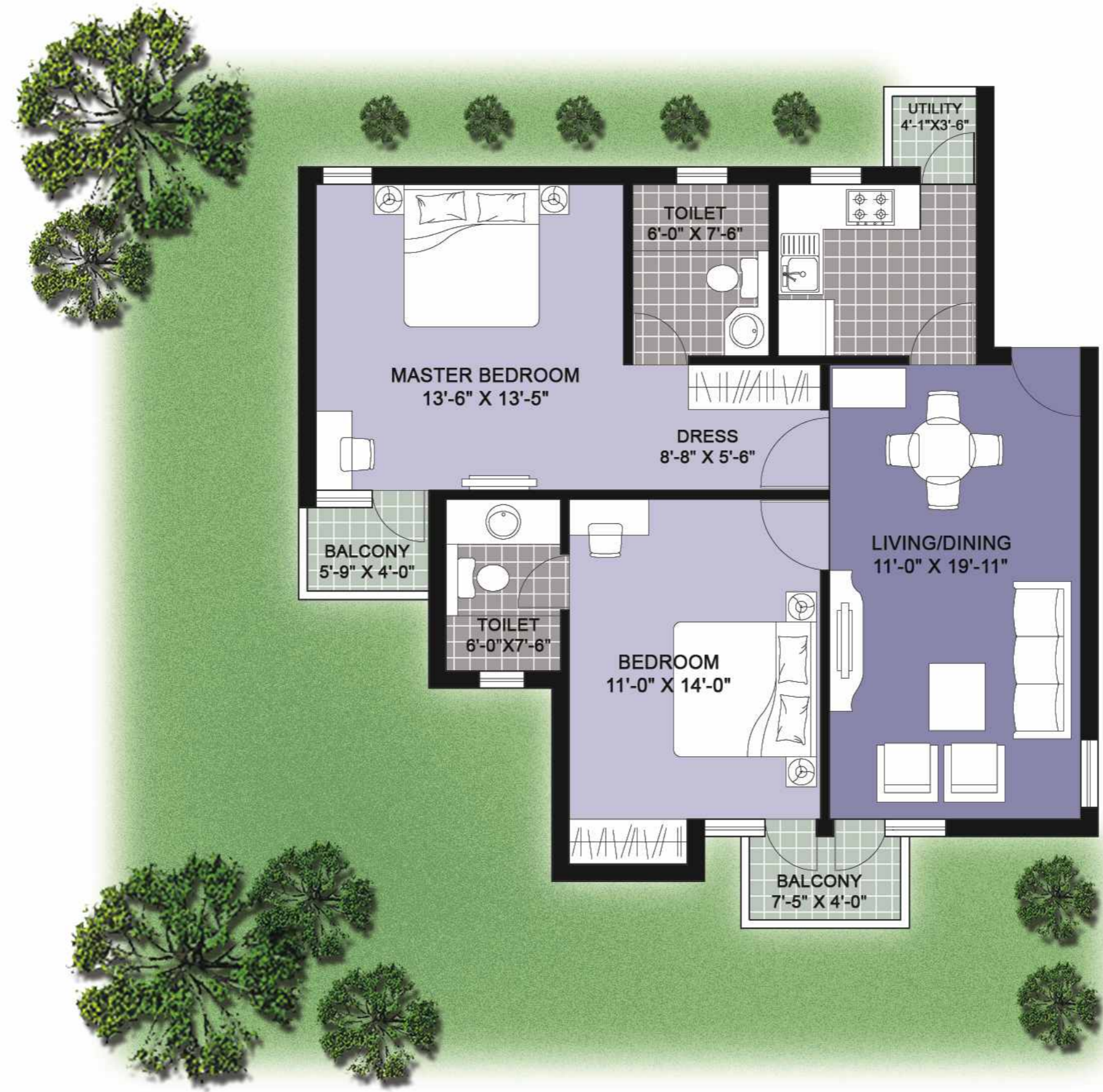
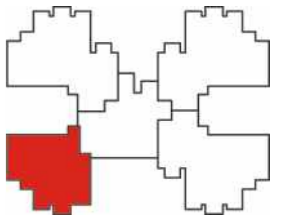


A1, A3, A5 : 104
A2, A4, A6 : 103*

Note: * indicates mirror image

Type - Z1




2BR2T: 1115 sq. ft.



A1, A3, A5 : G04
A2, A4, A6 : G03*

Note: * indicates mirror image

Specifications

	Structure		Earthquake resistant RCC framed structure
	Flooring	Living /Dining Bedrooms Balconies Common areas & staircase Lift lobby Domestic Help Room	Vitrified tiles Laminated wooden flooring Ceramic tiles Stone / marble Stone / vitrified tiles Ceramic tiles
	Walls / Ceiling	External Internal Lift lobby	Exterior paint Plastic emulsion paint, ceiling in OBD; domestic help room/toilet in OBD Combination of stone & paint
	Lift		One passenger and one service lift to each tower
	Kitchen	Flooring Wall finishes Kitchen Counter	Ceramic tiles Ceramic tiles upto 600mm height above the counter area Granite counter with stainless steel sink with drain board
	Doors	Internal External Main Door	Seasoned hardwood frames with moulded European style shutters Anodized / powder coated glazed aluminium doors Seasoned hardwood frames with moulded European style shutters
	Toilet	Wall Flooring Fittings	Ceramic tiles upto 2100mm height Ceramic tiles EWC & wash basin in white colour, single lever CP fittings, granite counter, pipelines for geyser
	Windows		Anodized / powder coated glazed aluminium windows
	Electrical		Three phase supply with independent meter, copper wiring in concealed conduits; modular switches
	Communication		One telephone jack each in living room and master bedroom Intercom facility to each flat in living room
	Television		TV Point in living room and master bedroom
	Power back-up		24x7 power back-up

All floorplans, sitemap, specifications, amenities, facilities and perspective views are tentative in nature and are subject to revision

Club House



- Gymnasium
- Multipurpose hall for meditation, yoga & gatherings
- Swimming pool
- Kids play area
- Changing rooms
- Pantry
- 24 x 7 power back-up

FOR BOOKING CONTACT



SARHA INVESTMENT CONSULTANT, NEW DLEHI

**PH : 09312502224, 9811167806,
09868200774, 9313041424.**

Telefax : 91-11-29223203, 29221112

**E-mail : sarhaindia@rediffmail.com
sarhaindia@hotmail.com**

**Website : www.sarharealestate.com
www.sarhaindia.com**